

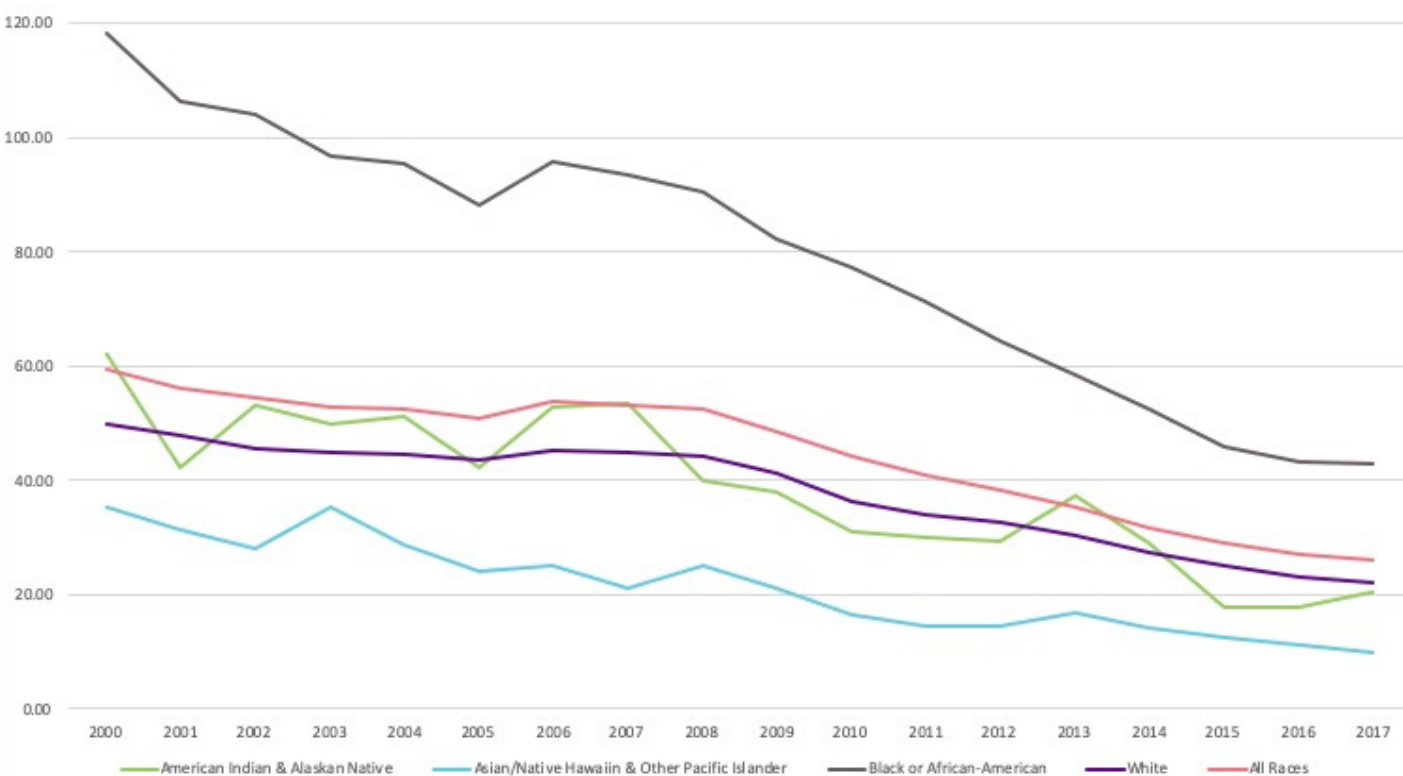
# MISSOURI TEEN PREGNANCY RATE BY RACE 2000-2017

PER 1,000 GIRLS AGE 15-19 YEARS

American Indian and Alaska Native		Asian/Native Hawaiian and Other Pacific Islander		Black or African-American		White		All Races	
Year	Teen Pregnancy Rate	Year	Teen Pregnancy Rate	Year	Teen Pregnancy Rate	Year	Teen Pregnancy Rate	Year	Teen Pregnancy Rate
2000	62.18	2000	35.18	2000	118.18	2000	49.84	2000	59.54
2001	42.39	2001	31.47	2001	106.40	2001	47.95	2001	56.29
2002	53.05	2002	27.92	2002	104.02	2002	45.66	2002	54.34
2003	49.72	2003	35.40	2003	96.75	2003	44.76	2003	52.85
2004	51.07	2004	28.73	2004	95.35	2004	44.62	2004	52.59
2005	42.41	2005	24.17	2005	88.30	2005	43.60	2005	50.92
2006	52.70	2006	25.01	2006	95.86	2006	45.26	2006	53.71
2007	53.41	2007	21.19	2007	93.61	2007	44.82	2007	53.22
2008	40.05	2008	25.03	2008	90.59	2008	44.38	2008	52.43
2009	38.09	2009	21.18	2009	82.15	2009	41.31	2009	48.68
2010	31.10	2010	16.49	2010	77.19	2010	36.37	2010	44.20
2011	29.90	2011	14.47	2011	71.27	2011	34.00	2011	40.89
2012	29.39	2012	14.68	2012	64.37	2012	32.65	2012	38.39
2013	37.37	2013	16.79	2013	58.38	2013	30.31	2013	35.33
2014	29.11	2014	14.03	2014	52.39	2014	27.35	2014	31.85
2015	17.84	2015	12.60	2015	46.02	2015	24.95	2015	28.89
2016	17.77	2016	11.26	2016	43.15	2016	23.11	2016	26.97
2017	20.40	2017	9.86	2017	43.01	2017	22.12	2017	26.17

Percentage Decrease, by Race, 2001-2017

Race	2000 Rate	2017 Rate	Percentage Decrease
American Indian and Alaska Native	62.18	20.4	65.58%
Asian/Native Hawaiian and Other Pacific Islander	35.18	9.86	72.00%
Black or African-American	118.18	43.01	63.60%
White	49.84	22.12	55.60%
All Races	59.54	26.17	56.04%



While rates of teenage pregnancy are decreasing overall, we see that rates in Minority populations are slower to decrease and fluctuate more on an annual basis than in White populations, but that White populations have the lowest overall percentage decrease.